

# CALIBRATION OF RADIOCARBON AGE TO CALENDAR YEARS

## MARIA

(Variables: C13/C12 = -19.3 o/oo : lab. mult = 1)

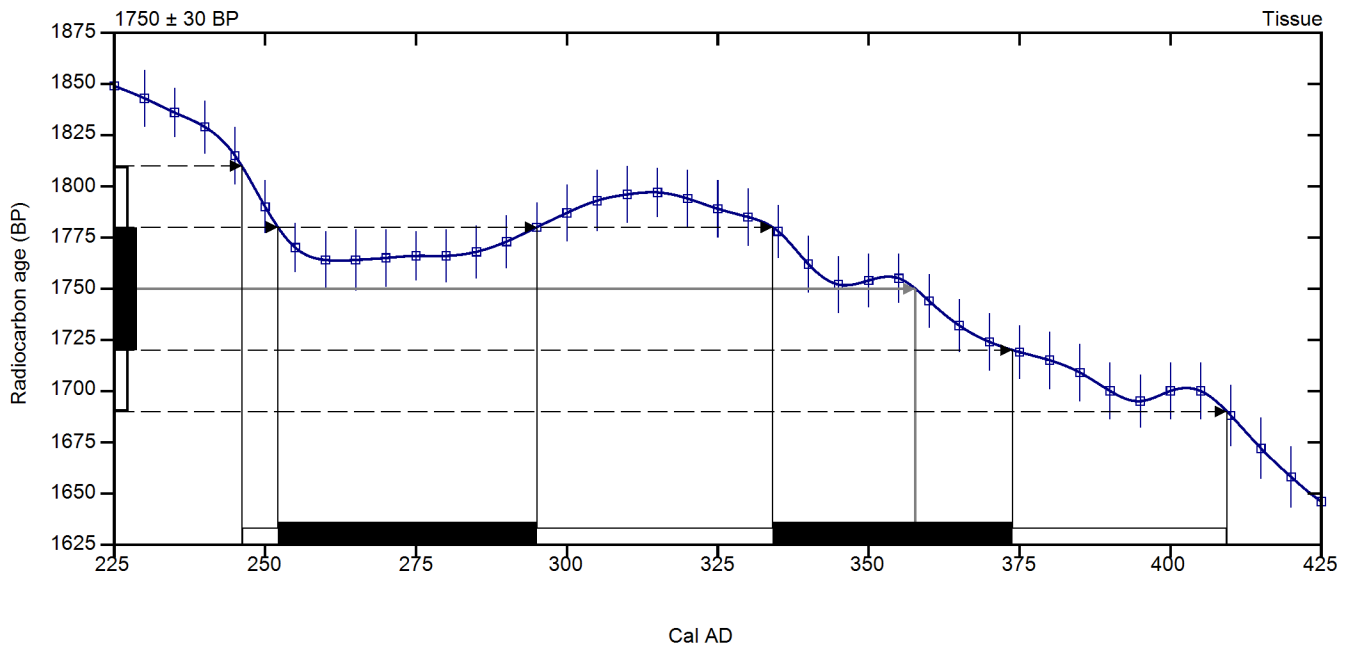
Laboratory number      **Beta-464741 : BTM**

Conventional radiocarbon age      **1750 ± 30 BP**

Calibrated Result (95% Probability)      **Cal AD 245 to 410 (Cal BP 1705 to 1540)**

Intercept of radiocarbon age with calibration curve      Cal AD 360 (Cal BP 1590)

Calibrated Result (68% Probability)      Cal AD 250 to 295 (Cal BP 1700 to 1655)  
Cal AD 335 to 375 (Cal BP 1615 to 1575)



Database used  
SHCAL13

### References

#### Mathematics used for calibration scenario

A Simplified Approach to Calibrating C14 Dates, Talma, A. S., Vogel, J. C., 1993, Radiocarbon 35(2):317-322

#### References to SHCAL13 database

Hogg AG, Hua Q, Blackwell PG, Niu M, Buck CE, Guilderson TP, Heaton TJ, Palmer JG, Reimer PJ, Reimer RW, Turney CSM, Zimmerman SRH. 2013. SHCal13 Southern Hemisphere calibration, 0–50,000 years cal BP. Radiocarbon 55(4):1889–1903.

## Beta Analytic Radiocarbon Dating Laboratory

4985 S.W. 74th Court, Miami, Florida 33155 • Tel: (305)667-5167 • Fax: (305)663-0964 • Email: beta@radiocarbon.com